

IPU RESEARCH NOTE

MICHIGAN STATE UNIVERSITY ■ INSTITUTE OF PUBLIC UTILITIES REGULATORY RESEARCH AND EDUCATION

UTILITY EMPLOYMENT TRENDS 2009

NOVEMBER 2009 ■ ipu.msu.edu

The Bureau of Labor Statistics (BLS) of the U.S. Department of Labor publishes annual data on utility employment. This research note summarizes data through August 2009 (preliminary) from the Current Employment Statistics survey (National) as extracted from the BLS website (www.bls.gov). Data are reported in thousands for both major categories and subcategories.

Four exhibits are provided: trends in utility and telecommunications employment (Exhibit 1), trends in utility employment (Exhibit 2), and trends in telecommunications employment (Exhibit 3).

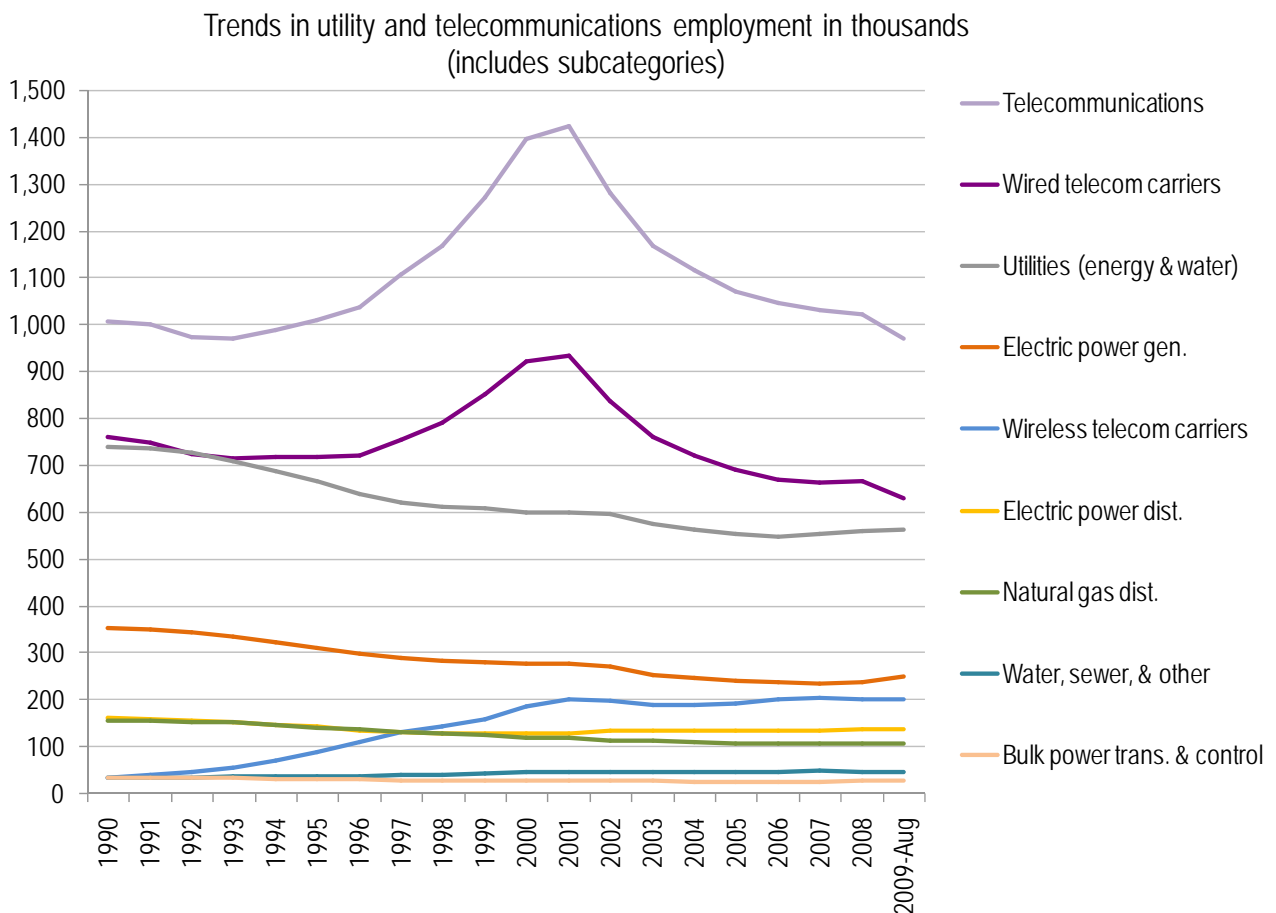


Exhibit 1. Trends in utility and telecommunications employment.

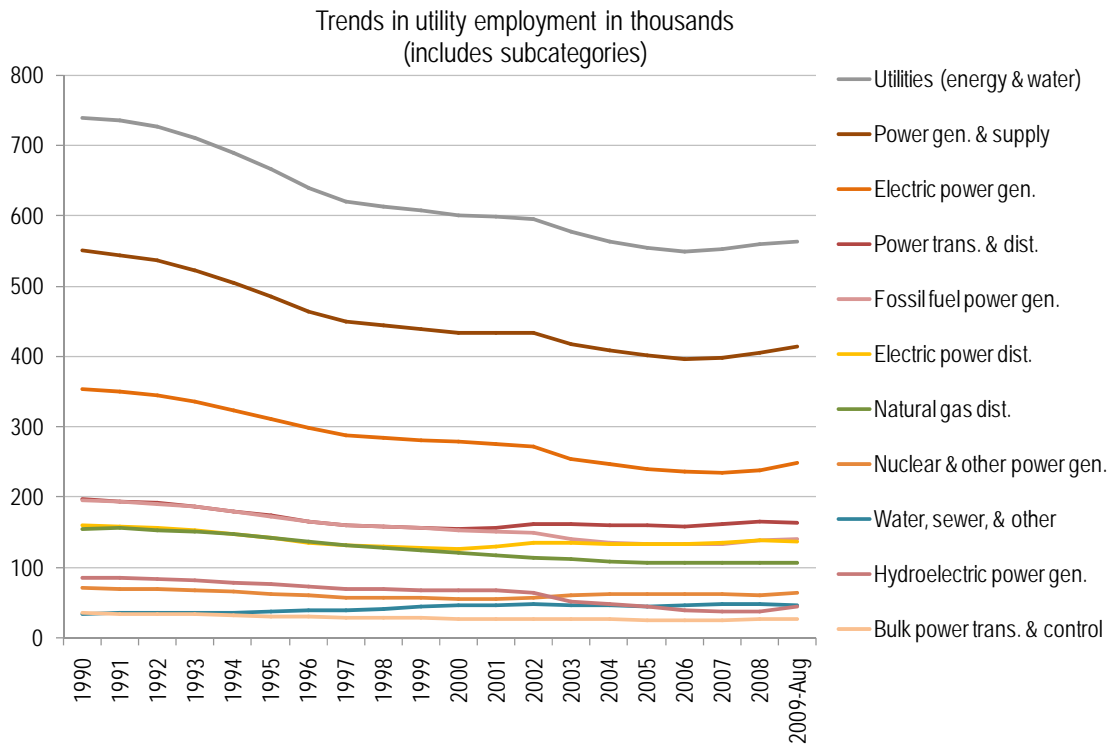


Exhibit 2. Trends in utility employment.

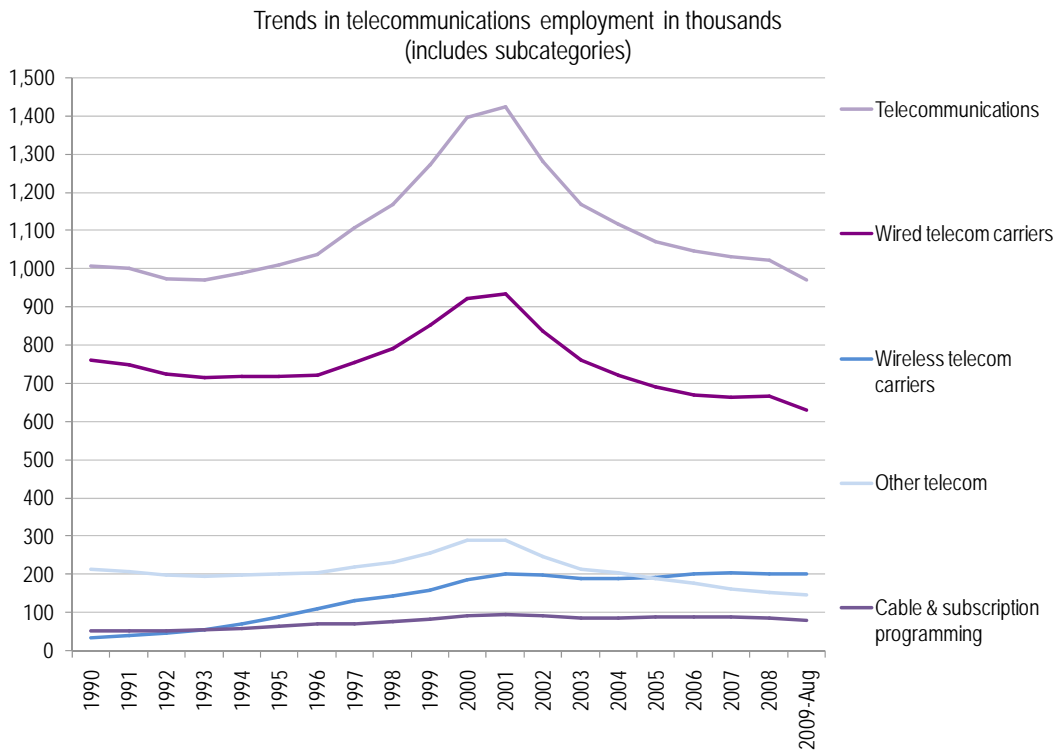


Exhibit 3. Trends in telecommunications employment.