

WORLD BANK TREND DATA ON PRIVATE PARTICIPATION IN INFRASTRUCTURE: 1990-2001

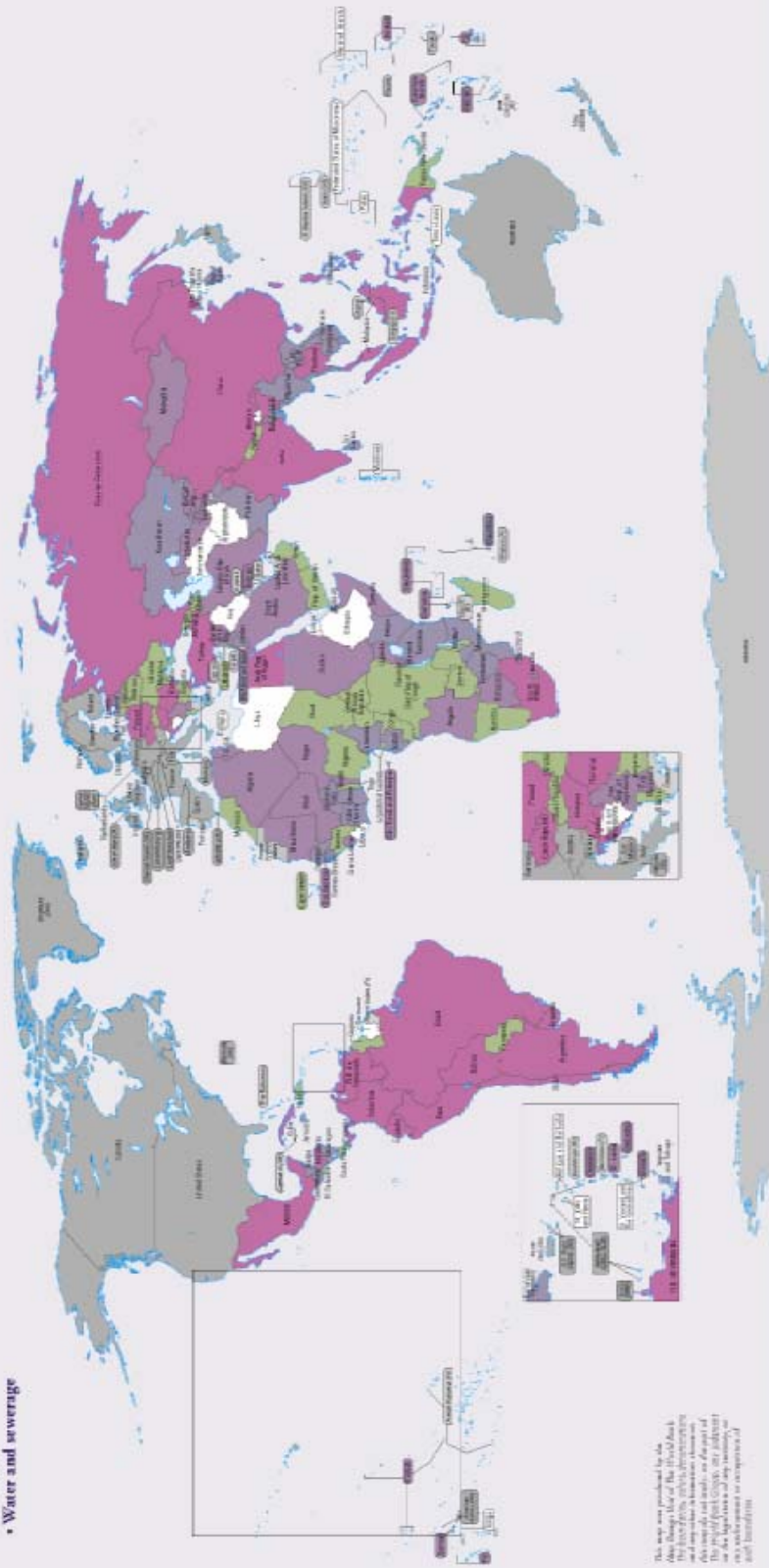
© Janice A. Beecher, Ph.D.

INSTITUTE OF PUBLIC UTILITIES AT MICHIGAN STATE UNIVERSITY

- The following charts were created using the World Bank's data published in Private Participation in Infrastructure: Trends in Developing Countries in 1990-2001 (Energy • Telecommunications • Transport • Water)
- See <http://rru.worldbank.org/PPIbook/>
- “Overall, the trend in PPI illustrates a dramatic increase in investment flows between 1990-1997 as governments around the world turned to the private sector for innovative and cost-effective solutions to increasing coverage, raising quality standards, and aiming for cost recovery and sustainability in infrastructure service provision. However, since the economic crises of the late 1990s, a few (but high-profile) cases of canceled projects, visible corporate governance and accounting problems, and a general global economic slowdown led to a chilling effect on investors and resulted in declines in investment so that 2001 levels paralleled that of the mid-1990s” (<http://rru.worldbank.org/PPIbook/>).
- Discussion questions
 - ▶ How can the trends be explained?
 - ▶ Is the decline in investment an aberration?
 - ▶ Are their underlying structural or institutional issues?
 - ▶ What is the outlook for global private-sector investment in infrastructure?
 - ▶ What is the role of economic regulation in infrastructure investment?

Economies with Private Participation in Infrastructure by Number of Sectors, 1990–2001

- INFRASTRUCTURE SECTORS**
- Energy
 - Telecommunications
 - Transport
 - Water and sewerage



This map was prepared by the World Bank as part of the World Bank's Infrastructure Sector Review and is not intended to represent the views of the World Bank or any other organization. The World Bank does not assume any responsibility for any errors or omissions in this map. The World Bank is not responsible for any damage or loss resulting from the use of this map.

Developing Economies by Income

LOW INCOME

Afghanistan
 Angola
 Armenia
 Azerbaijan
 Bangladesh
 Benin
 Bhutan
 Burkina Faso
 Burundi
 Cambodia
 Cameroon
 Central African Republic
 Chad
 Comoros
 Congo, Dem. Rep. of
 Congo, Rep. of
 Côte d'Ivoire
 Eritrea
 Ethiopia
 Georgia, The
 Georgia
 Ghana
 Guinea
 Guinea-Bissau
 Haiti
 India
 Indonesia
 Kenya
 Korea, Dem. Rep. of
 Kyrgyz Republic
 Lao PDR
 Lesotho
 Liberia
 Madagascar
 Malawi
 Mali
 Mauritania
 Moldova
 Mongolia
 Mozambique
 Myanmar
 Nepal
 Nicaragua
 Niger
 Nigeria
 Pakistan
 Rwanda
 São Tomé and Príncipe
 Senegal
 Sierra Leone
 Solomon Islands
 Somalia
 Sudan
 Tajikistan
 Tanzania
 Togo
 Turkmenistan
 Uganda
 Ukraine
 Uzbekistan
 Vietnam
 Yemen, Rep. of
 Zambia
 Zimbabwe

LOWER MIDDLE INCOME

Albania
 Algeria
 Belarus
 Belize
 Bolivia
 Bosnia and Herzegovina
 Bulgaria
 Cape Verde
 China
 Colombia
 Costa Rica
 Cuba
 Djibouti
 Dominican Republic
 Ecuador
 Egypt, Arab Rep. of
 El Salvador
 Equatorial Guinea
 Fiji
 Guatemala
 Guyana
 Honduras
 Iran, Islamic Rep. of
 Iraq
 Jamaica
 Jordan
 Kazakhstan
 Kiribati
 Latvia
 Lithuania
 Macedonia, FYR
 Maldives
 Marshall Islands
 Micronesia, Fed. Sts.
 Morocco
 Namibia
 Papua New Guinea
 Paraguay
 Peru
 Philippines
 Romania
 Russian Federation
 Samoa
 Sri Lanka
 St. Vincent and the Grenadines
 Suriname
 Swaziland
 Syrian Arab Republic
 Thailand
 Tonga
 Tunisia
 Turkey
 Vanuatu
 West Bank and Gaza
 Yugoslavia, Fed. Rep.

UPPER MIDDLE INCOME

American Samoa
 Antigua and Barbuda
 Argentina
 Bahrain
 Barbados
 Botswana
 Brazil
 Chile
 Croatia
 Czech Republic
 Dominica
 Estonia
 Gabon
 Grenada
 Hungary
 Isle of Man
 Korea, Rep. of
 Lebanon
 Libya
 Malaysia
 Malta
 Mauritius
 Mayotte
 Mexico
 Oman
 Palau
 Panama
 Poland
 Puerto Rico
 Saudi Arabia
 Seychelles
 Slovak Republic
 South Africa
 St. Kitts and Nevis
 St. Lucia
 Trinidad and Tobago
 Uruguay
 Venezuela, RB

Note: Economies are classified in the category to which they belonged in 2000.

Figure 1.1
Annual Investment in Infrastructure Projects with Private Participation,
Developing Countries, 1990-2001 (2001 US\$ billion)

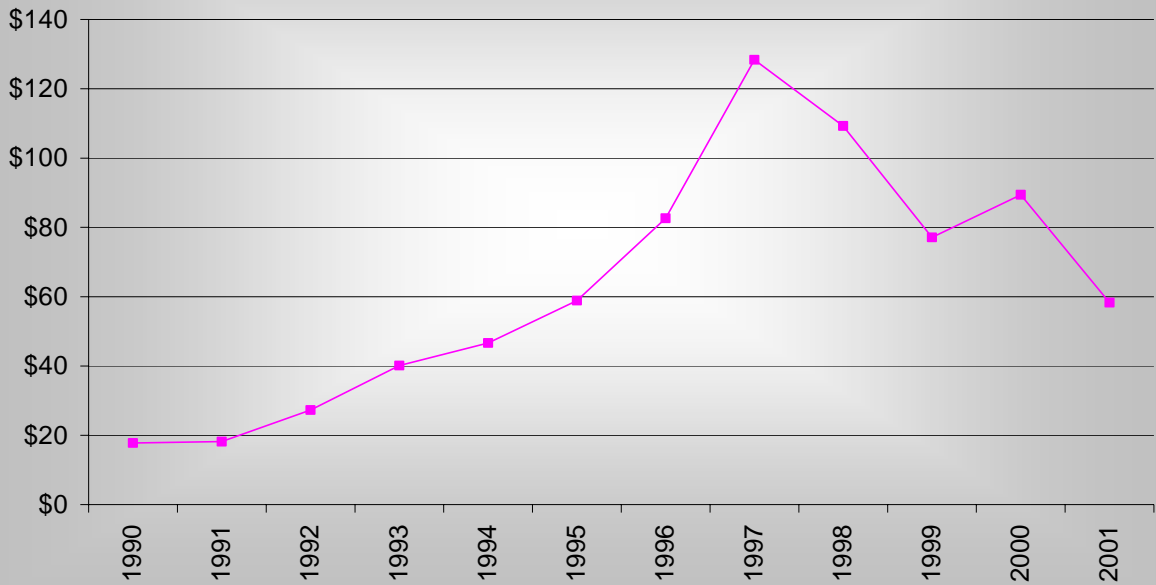


Figure 1.2
Infrastructure Projects with Private Participation by Year of Financial Closure,
Developing Countries, 1990-2001 (number of projects)

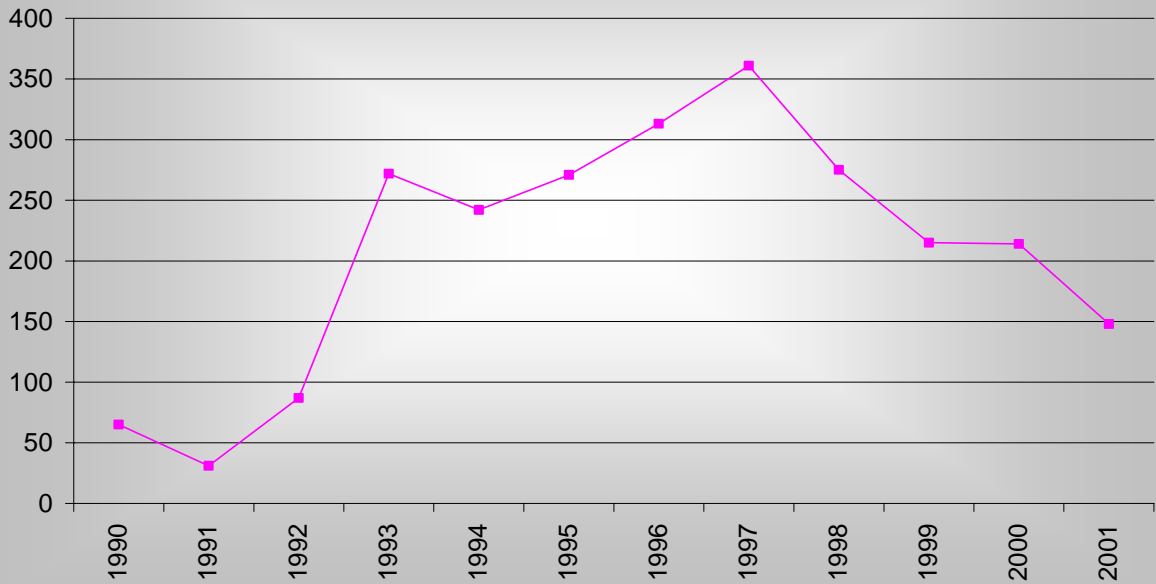


Figure 1.3
Annual Investment in Infrastructure Projects with Private Participation by Destination of Investment, Developing Countries, 1990-2001 (2001 US\$ billion)

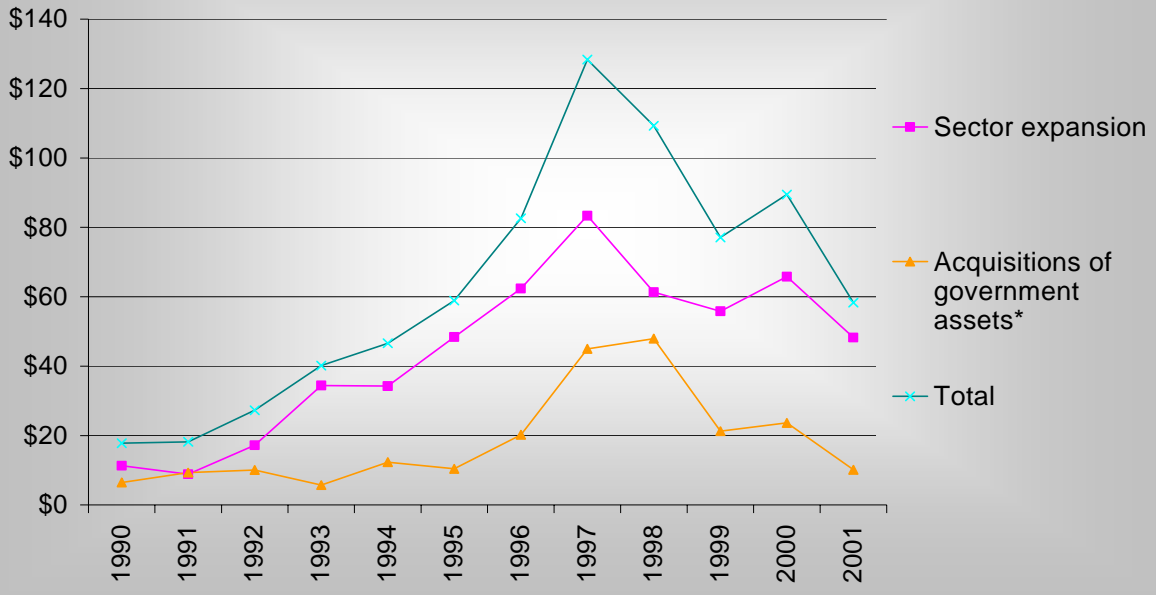


Figure 1.4
Annual Investment in Infrastructure Projects with Private Participation, by Sector, Developing Countries, 1990-2001 (2001 US\$ billion)

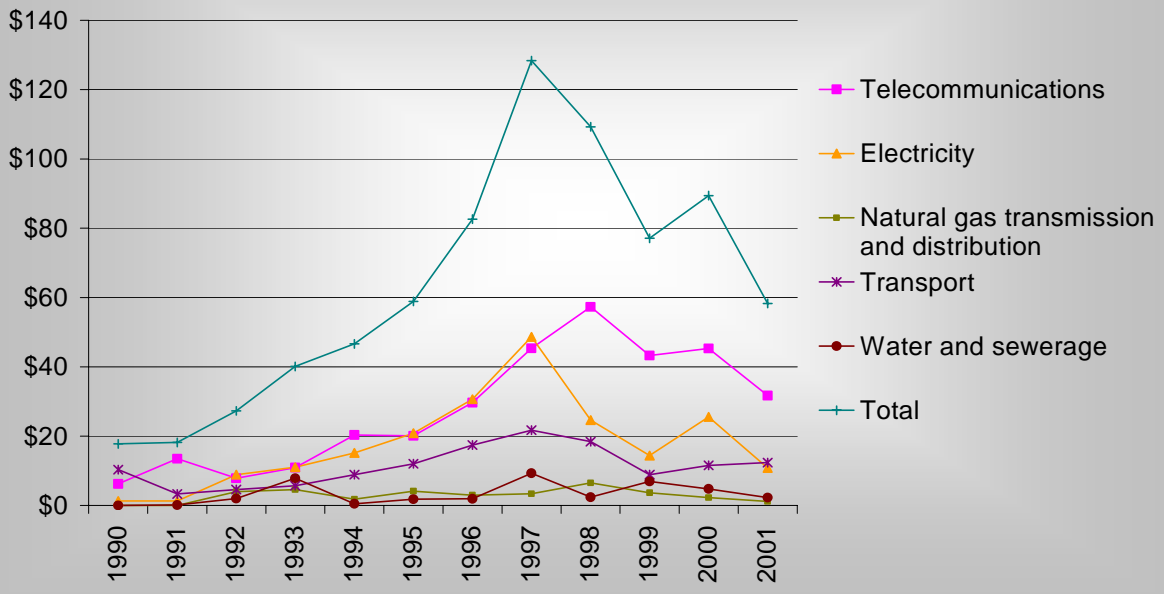


Figure 1.5
Annual Investment in Infrastructure Projects with Private Participation by Region, Developing Countries, 1990-2001 (2001 US\$ billion)

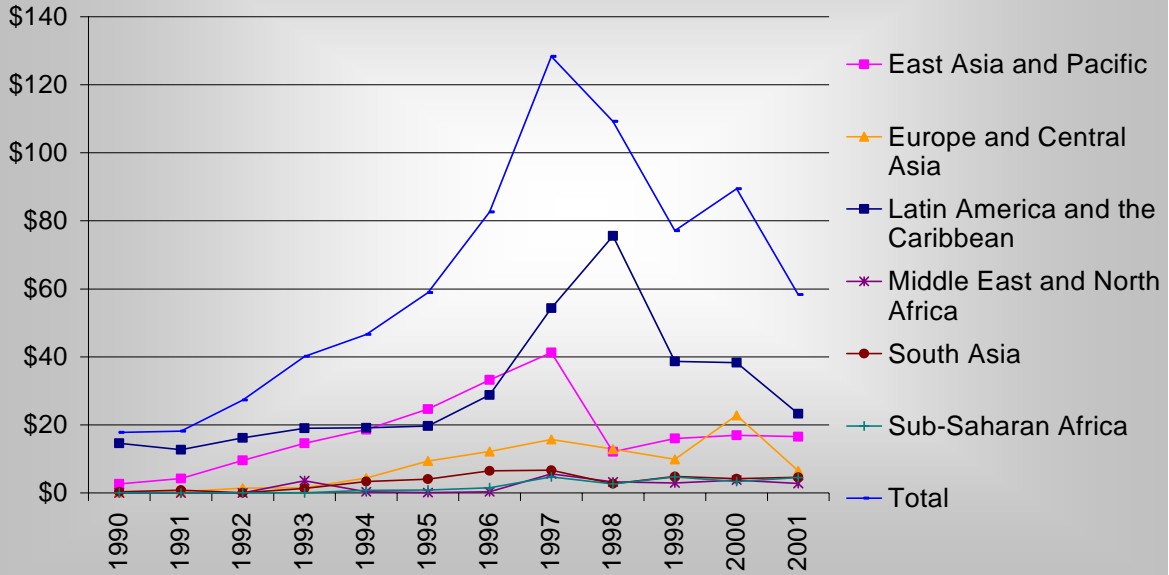


Figure 1.6
Cumulative Investment in Infrastructure Projects with Private Participation by Region, Developing Countries, 1990-2001 (2001 US\$ billion)

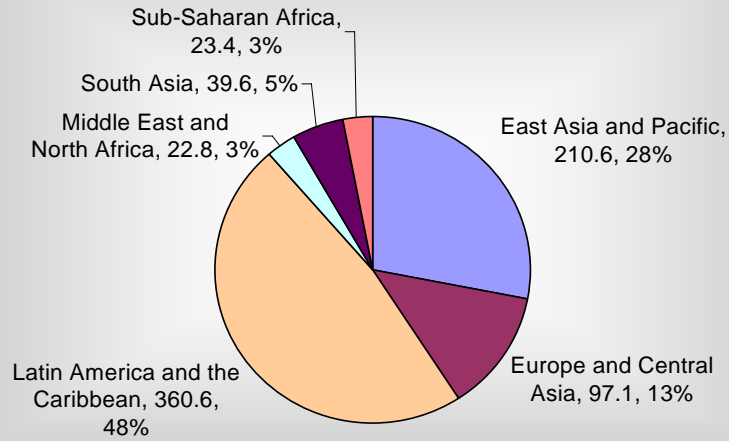


Figure 1.7
 Cumulative Investment in Infrastructure Projects with Private Participation by Region and Type, Developing Countries, 1990-2001 (2001 US\$ billion)

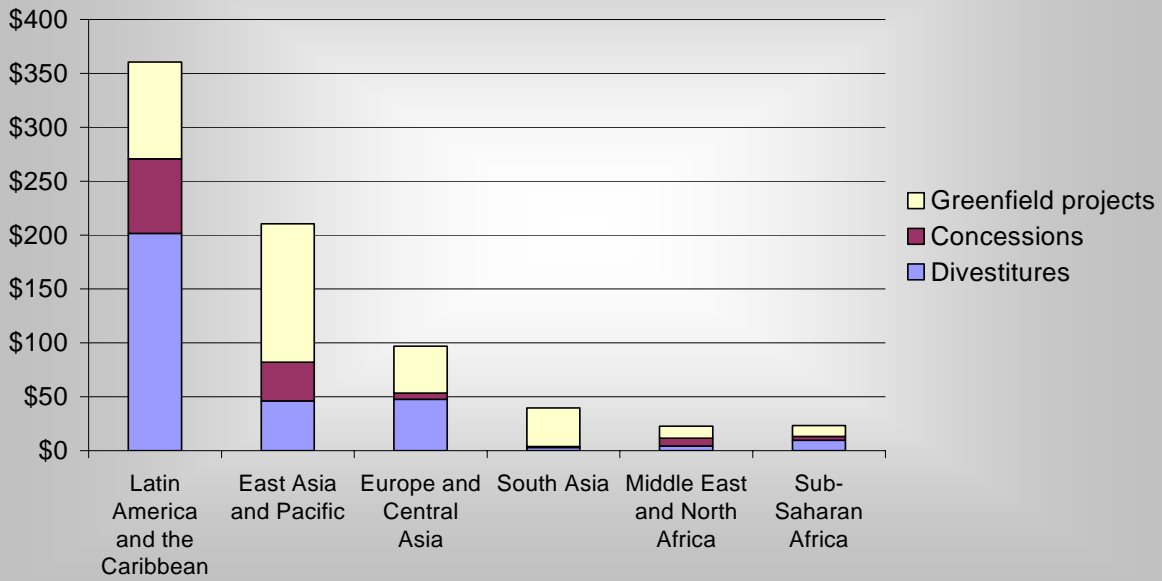


Figure 1.8
 Cumulative Investment in Infrastructure Projects with Private Participation by Sector and Subsector, Developing Countries, 1990-2001 (2001 US\$ billion)

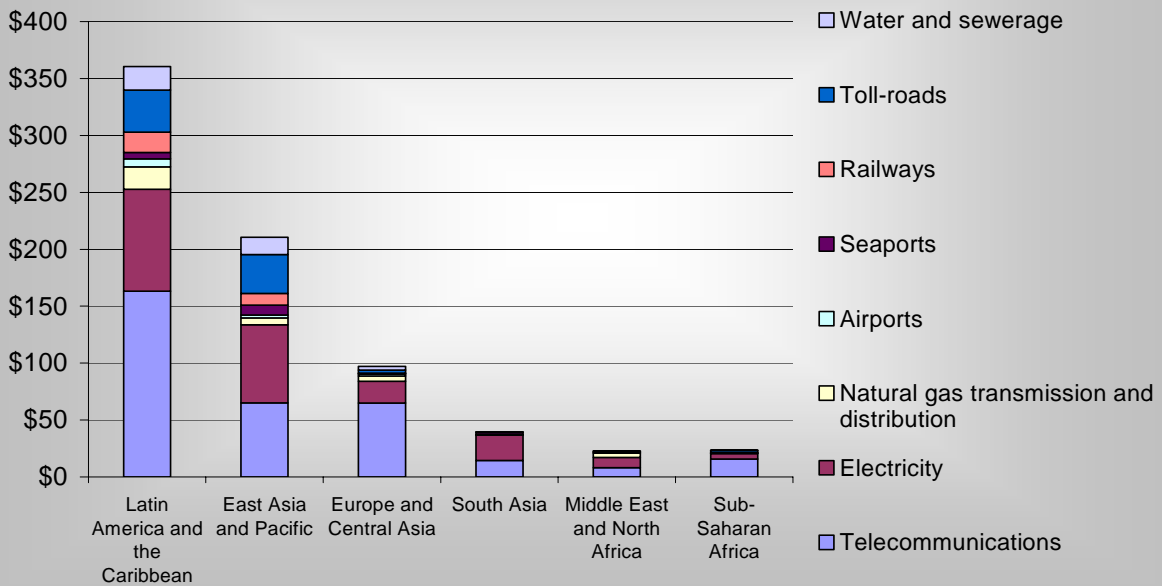


Figure 1.9
Annual Investment in Infrastructure Projects with Private Participation by Type,
Developing Countries, 1990-2001 (2001 US\$ billion)

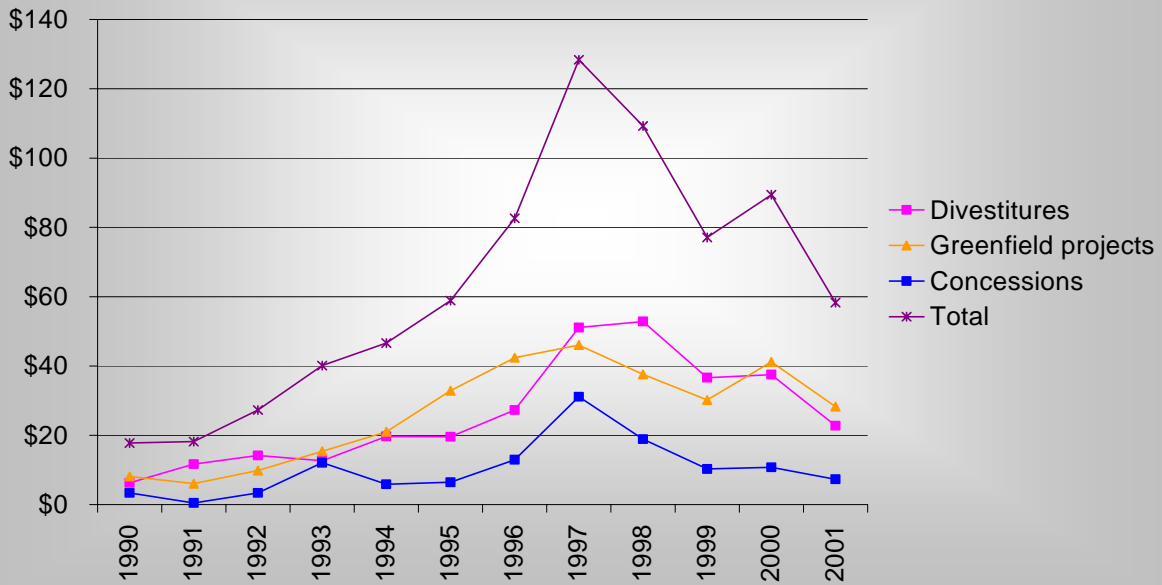


Figure 1.10
Annual Investment in Infrastructure Projects with Private Participation by
Income Group, Developing Countries, 1990-2001 (2001 US\$ billion)

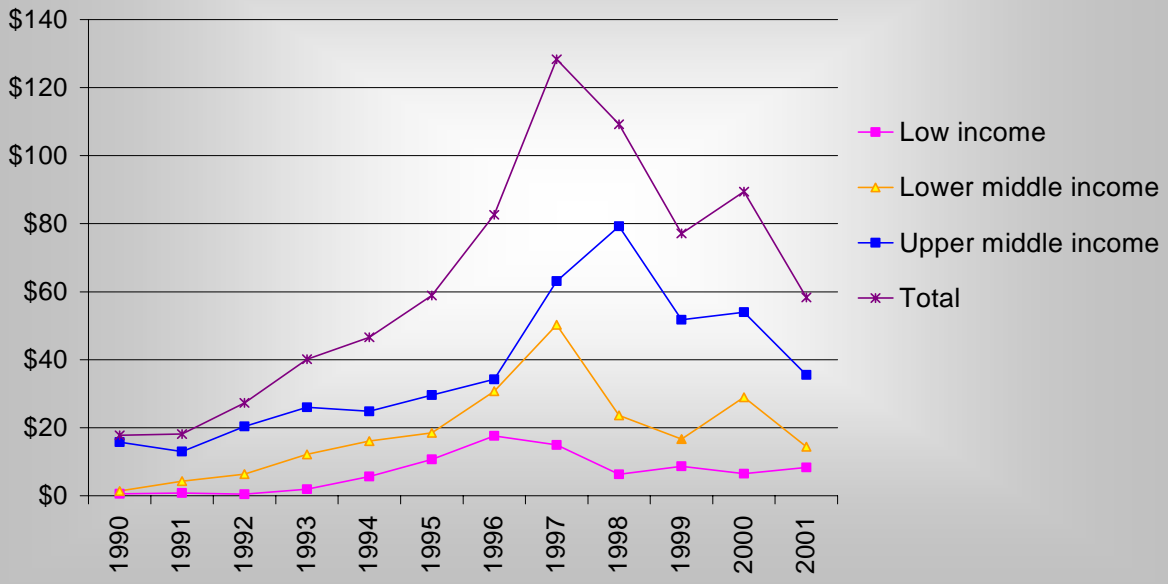


Figure 1.11
Cumulative investment by sector and country income (2001 US\$ billion)

